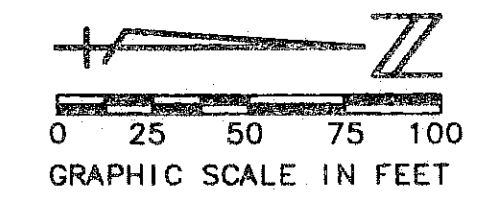


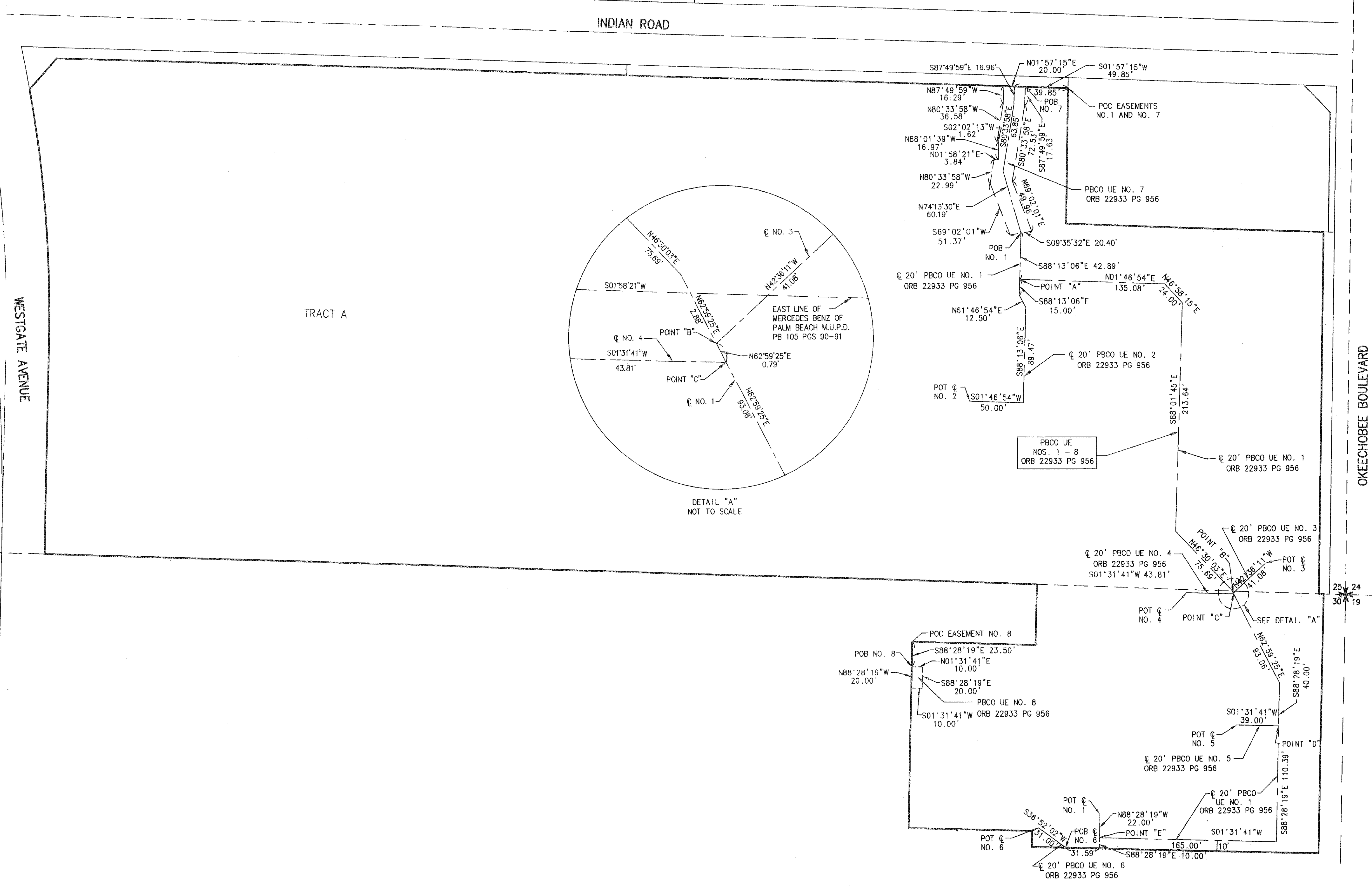
MERCEDES BENZ OF PALM BEACH M.U.P.D. PLAT TWO

A REPLAT OF MERCEDES BENZ OF PALM BEACH, M.U.P.D., AS RECORDED IN PLAT BOOK 105, PAGES 90 TO 91, AND PORTIONS OF WEST GATE ESTATES, AS RECORDED IN PLAT BOOK 8, PAGE 38; THE AMENDED PLAT OF BLOCKS 1, 2, 3, 4, 5, 6 AND THE NORTHERN PART OF BLOCK A WEST GATE ESTATES, AS RECORDED IN PLAT BOOK 9, PAGE 20; AND SHARON'S REPLAT OF PORTIONS OF WEST GATE ESTATES, AS RECORDED IN PLAT BOOK 15, PAGE 64. ALL RECORDED IN THE PUBLIC RECORDS OF PALM BEACH COUNTY, FLORIDA;
 BEING IN THE NORTHEAST ONE-QUARTER OF SECTION 25, TOWNSHIP 43 SOUTH, RANGE 42 EAST,
 AND IN THE NORTHWEST ONE-QUARTER OF SECTION 30, TOWNSHIP 43 SOUTH, RANGE 43 EAST,
 PALM BEACH COUNTY, FLORIDA
 SHEET 3 OF 3

STATE OF FLORIDA
 COUNTY OF PALM BEACH
 THIS PLAT WAS FILED FOR RECORD
 THIS _____ DAY OF _____
 AD, 2009 AND DULY RECORDED
 IN PLAT BOOK _____ ON PAGES
 _____ AND _____
 SHARON R. BOCK,
 CLERK AND COMPTROLLER
 BY: _____, D.C.



CIRCUIT COURT SEAL



THIS INSTRUMENT WAS PREPARED BY MANUEL A. GUTIERREZ, P.S.M. IN THE OFFICES OF MOCK, ROOS & ASSOCIATES, INC., 5720 CORPORATE WAY, WEST PALM BEACH, FLORIDA 33407.

SCALE:
 1"=50'
 P.A. NO.:
 A5063.06
 DATE:
 OCTOBER 2008
 DRAWING NO.:
 43-42-25-64

FLORIDA L.B. NO. 48

MOCK ROOS
 ENGINEERS & PLANNERS

5720 Corporate Way, West Palm Beach, Florida 33407
 (561) 683-3113, fax 478-7248

MERCEDES BENZ OF PALM BEACH, M.U.P.D. PLAT TWO
 BEING A PORTION OF THE NORTHEAST QUARTER SECTION 25, TOWNSHIP 43 SOUTH, RANGE 42 EAST, AND A PORTION OF THE NORTHWEST QUARTER SECTION 30, TOWNSHIP 43 SOUTH, RANGE 43 EAST, PALM BEACH COUNTY, FLORIDA

S:\vorne\mrcoback2\dwg\ek2\m01.dwg 1/28/2009 8:58:57 AM EST